



**INTERNATIONAL
GEMOLOGICAL
INSTITUTE**

472195266



September 8, 2021
IGI Report Number 472195266

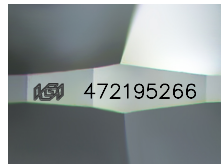
NATURAL DIAMOND
ROUND BRILLIANT
5.29 - 5.32 x 3.27 mm

Carat Weight 0.56 CARAT
Color Grade J
Clarity Grade VS 1
Cut Grade EXCELLENT
Polish EXCELLENT
Symmetry EXCELLENT
Fluorescence SLIGHT
Inscription(s) IGI 472195266
Comments: IDEAL CUT ROUND
BRILLIANT

DIAMOND REPORT

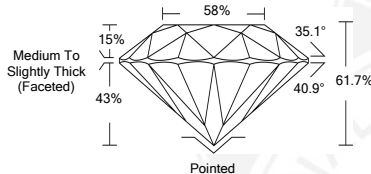
Electronic COPY

September 8, 2021
IGI Report Number 472195266
Description NATURAL DIAMOND
Shape and Cutting Style ROUND BRILLIANT
Measurements 5.29 - 5.32 x 3.27 mm



GRADING RESULTS

Carat Weight 0.56 CARAT
Color Grade J
Clarity Grade VS 1
Cut Grade EXCELLENT



ADDITIONAL GRADING INFORMATION

Polish EXCELLENT
Symmetry EXCELLENT
Fluorescence SLIGHT

Identification Features CRYSTAL, FEATHER
Inscription(s) IGI 472195266

Comments: IDEAL CUT ROUND BRILLIANT



September 8, 2021
IGI Report Number 472195266

NATURAL DIAMOND
ROUND BRILLIANT
5.29 - 5.32 x 3.27 mm

Carat Weight 0.56 CARAT
Color Grade J
Clarity Grade VS 1
Cut Grade EXCELLENT
Polish EXCELLENT
Symmetry EXCELLENT
Fluorescence SLIGHT
Inscription(s) IGI 472195266
Comments: IDEAL CUT ROUND
BRILLIANT

COLOR

D - F	G - J	K - M	N - R	S - Z	FANCY
Colorless	Near Colorless	Slightly Tinted	Very Light Color	Light Color	

CLARITY

IF	WS ¹⁻²	VS ¹⁻²	SI ¹⁻²	I ¹⁻²
Internally Flawless	Very Very Slightly Included	Very Slightly Included	Slightly Included	Included

© IGI 2020, International Gemological Institute

FD - 10 20



THIS DOCUMENT WAS PRODUCED WITH THE FOLLOWING SECURITY MEASURES: SPECIAL DOCUMENT PAPER, INK SCREENS, WATERMARK BACKGROUND DESIGN, HOLOGRAM AND OTHER SECURITY FEATURES NOT LISTED AND DO EXCEED DOCUMENT SECURITY INDUSTRY GUIDELINES.